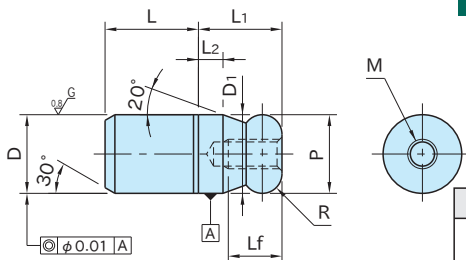


**BJ790****圆柱销**

本体

SK95  
淬火回火  
精密研磨

型号	D <sub>1</sub> (g6)	P ( <sup>-0.01</sup> <sub>-0.05</sub> )	L <sub>1</sub>	L <sub>2</sub>	R	D (n6)	L	M	L <sub>f</sub>	质量 (g)
<b>BJ790-08001</b>	8	8	8	2	R2	8	10	M3×0.5	6	6
<b>BJ790-10001</b>	10	10	10	2.5	R2.5	10	13			12
<b>BJ790-12001</b>	12	12	12	3	R3	12	15	M4×0.7	8	21
<b>BJ790-16001</b>	16	16	16	4	R4	16	20	M5×0.8	10	51