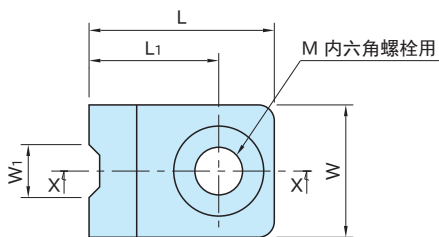
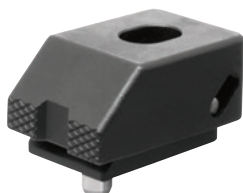


CP106

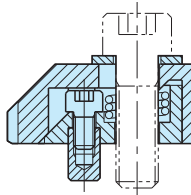
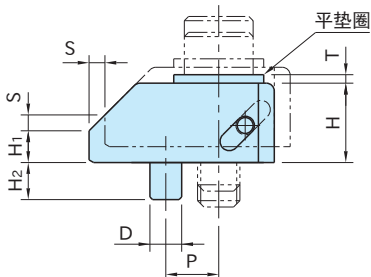
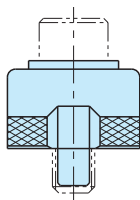
尖型侧面固定夹具



WEB 产品视频公布



本体
S45C
淬火回火
四氧化三铁膜

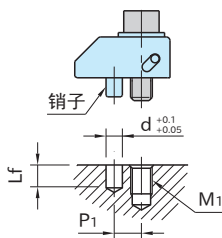


剖面X-X

型号	S	W	W ₁	H ₁	L ₁	P	D (h7)	H ₂	M	L	H	T	夹紧力 (kN)	容许紧固扭矩 (N·m)	质量 (g)
CP106-08015	3	25	10	6	24.5	10	6	7	M 8	35	15	1.6	5.6	20	100
CP106-10019	4	30	11	8	29	12			M10	43	19	2	6.8	40	185
CP106-12023	5	35	12	9	37	16	8	10	M12	54	23	2.3	16	70	320
CP106-16025	6	40	14	10	45	20			M16	65	25	3.2	22	110	520

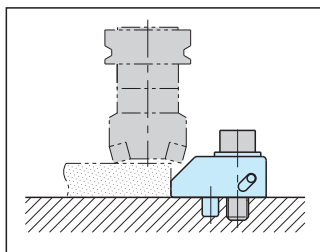
使用示例及使用方法

■ 安装方法



型号	M ₁	d	L _f	P ₁
CP106-08015	M 8	6	8	10
CP106-10019	M10			12
CP106-12023	M12	8	11	16
CP106-16025	M16			20

需要加工一个销用孔，用来防止本体夹紧时的向后滑移。



附 件

平垫圈...1个