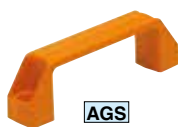


# AGS

# PLASTIC HANDLES



Original ELESA Model M.443



**AGS**



**AGSE**

Conductive Design

(Conductive)



**AGS-AE**

Heat resistance: 150°C

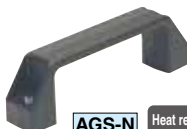
Self extinguishing

(Self-extinguishing)



**AGS-PP**

(Polypropylene plastic)



**AGS-N**

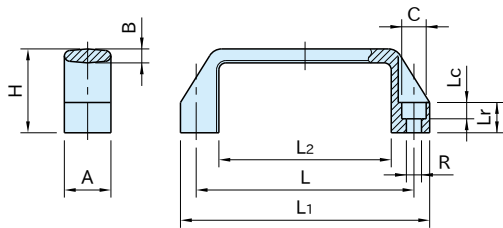
Heat resistance: 150°C

(Countersunk Head Screw Mounting)

★ **One Point**

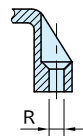
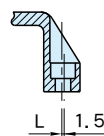
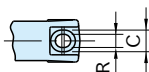
Conductive and Self-extinguishing specs are available

| Type   | Handle  |
|--|---|
| <b>AGS</b>                                   | Glass-fiber reinforced polyamide plastic<br>Black matte, Orange matte, Gray matte |
| <b>AGSE</b><br><b>AGS-AE</b><br><b>AGS-N</b> | Glass-fiber reinforced polyamide plastic<br>Black matte                           |
| <b>AGS-PP</b>                                | Polypropylene plastic<br>Black matte  |



**AGS AGSE AGS-AE AGS-PP**

(Hex-socket Head Cap Screw Mounting)



**AGS-N**

(Countersunk Head Screw Mounting)

\*AGS180 and AGS180PP handles have long mounting holes.

| Size              | L    | L <sub>1</sub> | L <sub>2</sub> | H  | A  | B   | L <sub>r</sub> |
|-------------------|------|----------------|----------------|----|----|-----|----------------|
| <b>AGS</b> 110    | 93.5 | 109            | 74             | 38 | 21 | 6   | 13             |
| <b>AGSE</b> 130   | 117  | 137            | 93             | 41 | 26 | 7   | 15             |
| <b>AGS-AE</b> 150 | 132  | 150            | 108            | 45 | 27 |     | 16             |
| <b>AGS-PP</b> 180 | 149  | 172            | 125            | 47 | 28 | 7.5 | 17             |
| <b>AGS-N</b> 200  | 179  | 196            | 151            | 50 |    |     |                |
| <b>AGS-N</b> 260  | 235  | 260            | 201            | 54 | 30 | 8.5 | 20             |

**AGS**

| Black         | Orange           | Gray             | R   | C    | L <sub>c</sub> | Weight (g) |
|---------------|------------------|------------------|-----|------|----------------|------------|
| Part Number   | Part Number      | Part Number      |     |      |                |            |
| <b>AGS110</b> | <b>AGS110-OG</b> | <b>AGS110-GR</b> | 6.5 | 10.5 | 7              | 26         |
| <b>AGS130</b> | <b>AGS130-OG</b> | <b>AGS130-GR</b> |     |      |                | 42         |
| <b>AGS150</b> | <b>AGS150-OG</b> | <b>AGS150-GR</b> |     |      |                | 47         |
| <b>AGS180</b> | —                | —                | 8.5 | 13.5 | 8.5            | 53         |
| <b>AGS200</b> | <b>AGS200-OG</b> | <b>AGS200-GR</b> |     |      |                | 70         |
| <b>AGS260</b> | <b>AGS260-OG</b> | <b>AGS260-GR</b> |     |      |                | 10.5       |

**AGSE** (Conductive)

| Part Number    | R   | C    | Lc  | Weight (g) |
|----------------|-----|------|-----|------------|
| <b>AGSE110</b> | 6.5 | 10.5 | 7   | 21         |
| <b>AGSE130</b> | 8.5 | 13.5 | 8.5 | 34         |

**AGS-PP** (Polypropylene plastic)

| Black<br>Part Number | R   | C    | Lc  | Weight (g) |
|----------------------|-----|------|-----|------------|
| <b>AGS110PP</b>      | 6.5 | 10.5 | 7   | 21         |
| <b>AGS130PP</b>      | 8.5 | 13.5 | 8.5 | 34         |
| <b>AGS150PP</b>      |     |      |     | 40         |
| <b>AGS180PP</b>      |     |      |     | 46         |
| <b>AGS200PP</b>      |     |      |     | 62         |
| <b>AGS260PP</b>      |     |      |     | 10.5       |

**Technical Information**

Working temperature

**AGS-AE** **AGS-N** max. 150°C min. -30°C**AGS** **AGSE** max. 130°C min. -30°C**AGS-PP** max. 100°C min. 0°C**Strength Data**

| Part Number     | F <sub>H</sub> [N] | F <sub>V</sub> [N] | L <sub>H</sub> [J] | L <sub>V</sub> [J] |
|-----------------|--------------------|--------------------|--------------------|--------------------|
| <b>AGS110</b>   | 3500               | 2500               | 15                 | 8                  |
| <b>AGSE110</b>  |                    |                    |                    |                    |
| <b>AGS110N</b>  | 2000               | 2200               | 16                 | 6                  |
| <b>AGS110AE</b> | 1750               | 1700               | 9                  | 5                  |
| <b>AGS110PP</b> | 1700               | 1300               | 8                  | 3                  |
| <b>AGS130</b>   | 4500               | 2500               | 20                 | 13                 |
| <b>AGSE130</b>  |                    |                    |                    |                    |
| <b>AGS130AE</b> | 3500               | 2200               | 10                 | 8                  |
| <b>AGS130PP</b> | 2000               | 1500               | 10                 | 4                  |
| <b>AGS130N</b>  | 2500               | 2300               | 17                 | 7                  |
| <b>AGS150</b>   | 3500               | 2500               | 27                 | 14                 |
| <b>AGS150AE</b> | 3000               | 1800               | 12                 | 8                  |
| <b>AGS150PP</b> | 2000               | 1300               | 12                 | 5                  |
| <b>AGS180</b>   | 3000               | 2600               | 27                 | 15                 |
| <b>AGS180PP</b> | 1500               | 1300               | 14                 | 7                  |
| <b>AGS200</b>   | 2800               | 2700               | 28                 | 17                 |
| <b>AGS200AE</b> | 1400               | 2100               | 20                 | 13                 |
| <b>AGS200PP</b> | 1800               | 1300               | 16                 | 8                  |
| <b>AGS200N</b>  | 2500               | 2400               | 22                 | 15                 |
| <b>AGS260</b>   | 3200               | 3500               | 30                 | 22                 |
| <b>AGS260PP</b> | 1600               | 1700               | 17                 | 11                 |

**AGS-AE** (Self-extinguishing)

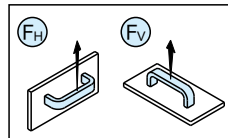
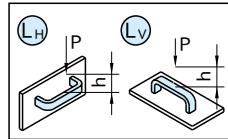
| Black<br>Part Number | R   | C    | Lc  | Weight (g) |
|----------------------|-----|------|-----|------------|
| <b>AGS110AE</b>      | 6.5 | 10.5 | 7   | 28         |
| <b>AGS130AE</b>      | 8.5 | 13.5 | 8.5 | 50         |
| <b>AGS150AE</b>      |     |      |     | 55         |
| <b>AGS200AE</b>      |     |      |     | 80         |

**AGS-N** (Countersunk Head Screw Mounting)

| Black<br>Part Number | R   | Weight (g) |
|----------------------|-----|------------|
| <b>AGS110N</b>       | 5.5 | 24         |
| <b>AGS130N</b>       | 6.5 | 44         |
| <b>AGS200N</b>       |     | 72         |

**Features**Self-extinguishing **AGS-AE** handles are UL94V-0 certified.**Notes:**

- Mounting-hole centers distances can have some variation depending on humidity or temperature.
- Use in hot or highly humid circumstances can deteriorate the plastic material properties.

**Tensile Stress**The stated F<sub>H</sub> and F<sub>V</sub> values denote the average of the breaking loads measured in a breaking test under normal working conditions.**Impact Strength**The stated L<sub>H</sub> and L<sub>V</sub> values denote the average of the breaking loads measured in a drop test with a load of 6.7N. L(J) = P(N) × h(m)**Thermal and Electric Properties of Conductive Design**

| Type        | Volume Resistivity   | Surface Resistance |
|-------------|----------------------|--------------------|
| <b>AGSE</b> | 10 <sup>3</sup> Ω·cm | 10 <sup>3</sup> Ω  |

"ESD" (electro-static discharge) is marked on the top surface of the handle.